



INSTRUCTION BULLETIN

No. 340243
Machine: 6200
Published: 6-99/00
System: OPTIONS

NOTE: DO NOT DISCARD the Parts List from the Instruction Bulletin. Place the Parts List in the appropriate place in your machine manual for future reference. Retaining the Parts List will make it easier to reorder individual parts and will save you the cost of ordering an entire kit.

NOTE: Numbers in parenthesis () are reference numbers for parts listed in Bill of Materials.

Installation instructions for kit number 384188

SYNOPSIS / PROBLEM:

This kit contains the parts needed to install an overhead guard kit on the model 6200 sweeper.

Please follow step-by-step instructions.

SPECIAL TOOLS / CONSIDERATIONS: Hoist

(Estimated time to complete: 1 hour)

PREPARATION:

(Refer to FIG. 1)

FOR SAFETY: Before leaving or servicing machine, stop on level surface and set parking brake. Then turn off machine and remove key.

INSTALLATION:

(Refer to FIG. 1)

1. Connect the two rear overhead guard legs (1) to the overhead guard (5) with hex screws (6), washers (7), and lock nuts (8). (Refer to FIG. 1)
2. Carefully hoist the overhead guard above the machine.
3. Slowly lower the overhead guard down on top of the machine to be mounted.
4. Loosely mount the overhead guard side mounting locations to the machine with hex screws (9), flat washers (4), and lock nuts (10). (Refer to FIG. 1)
5. Loosely mount the rear legs (1) to the machine with hex screws (3), flat washers (4), and leg plates (2). (Refer to FIG. 1)
6. Tighten all mounting hardware.
7. Remove hoist from the top of the overhead guard.

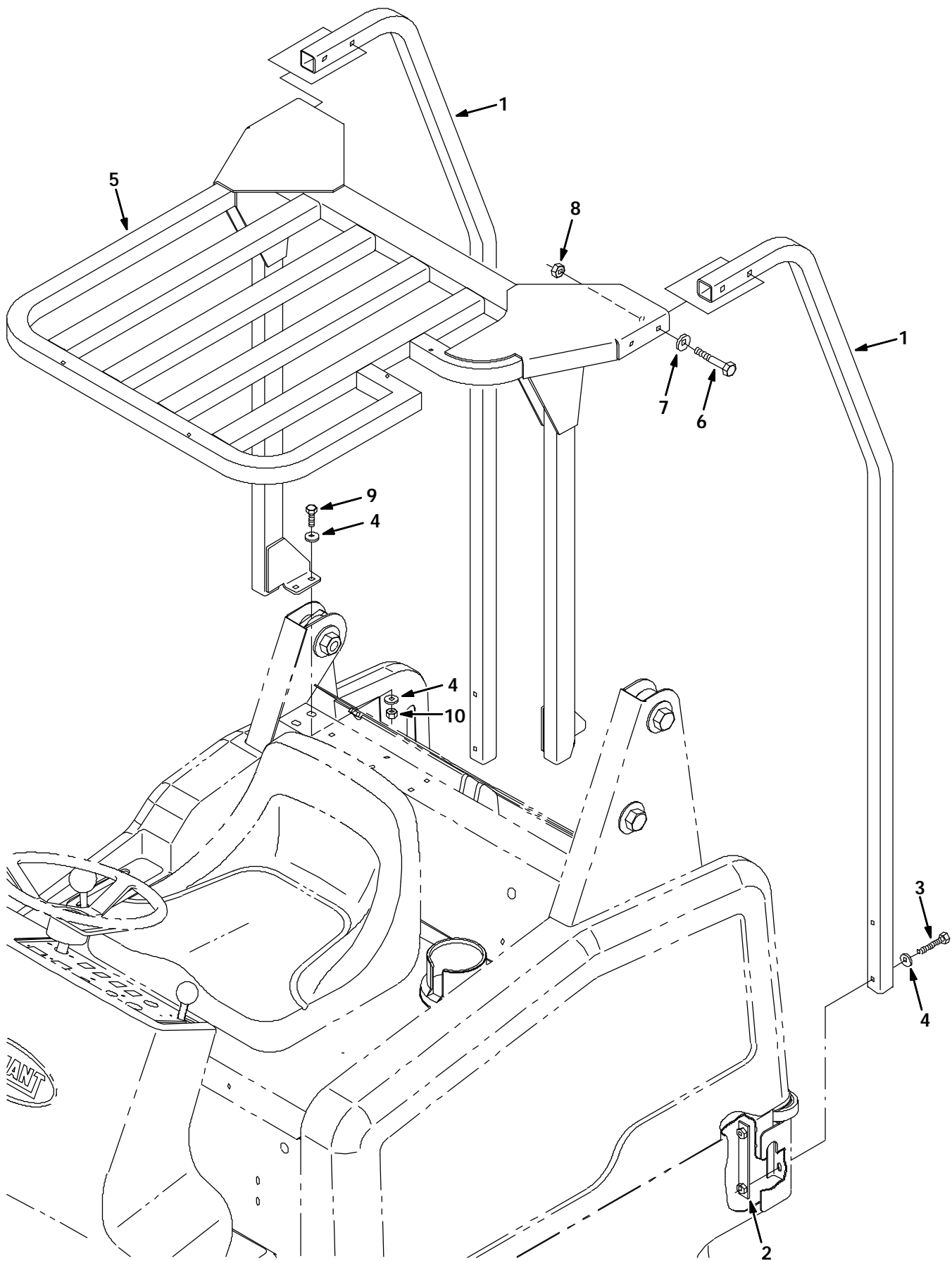


FIG. 1 - OVERHEAD GUARD KIT INSTALLATION

BILL OF MATERIALS FOR OVERHEAD GUARD KIT 384188

Ref.	TENNANT Part No.	Description	Qty.
1	383668	Leg, rear, Ohg	2
2	384183	Plate, Ohg, leg, rear	2
3	06963	Screw, hex, M10-1.5 X 60, 8.8	4
4	32485	Washer, flat .38 SAE	12
5	384170	Guard wldt, Ohg, top	1
6	33950	Screw, hex, M12-1.75 X 80, Ss	4
7	32486	Washer, flat, .50 SAE	4
8	08711	Nut, hex, lock, M12-1.75, NI	4
9	03192	Screw, hex, M10-1.5 X 30, 8.8	4
10	41430	Nut, hex, Lock, M10-1.5, NI	4

TENNANT COMPANY
P. O. Box 1452
Minneapolis, MN 55440-1452